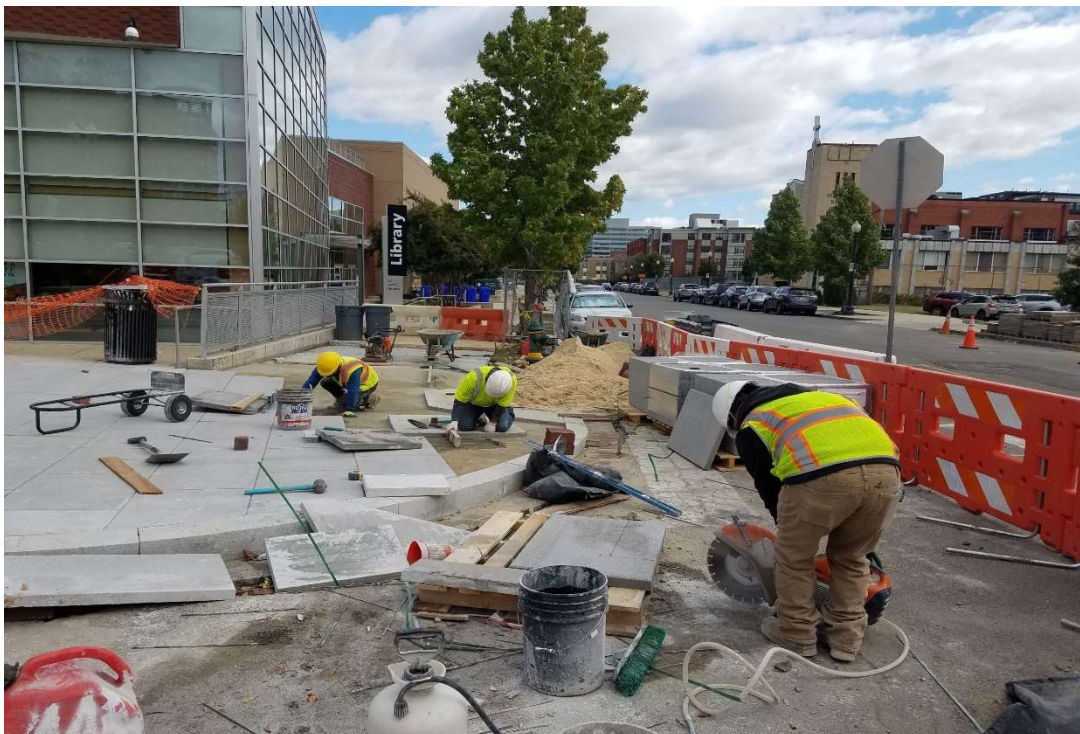


SAFETY IMPROVEMENTS ON NEW JERSEY AVENUE NW
DC CONTRACT NO. DCKA-2018-C-0017
FAP No.: CM-2017(042)

CONSTRUCTION MANAGER'S
WEEKLY PROGRESS REPORT 23
10/13/2019 – 10/19/2019

Project Website: www.newjerseyaverehab.com



10/17/2019 –Block sidewalk construction at NE corner of New Jersey Ave. & L St. NW (East view)

1. EXECUTIVE SUMMARY

Project Description:

Work under this contract consists of safety/streetscape improvements along New Jersey Avenue, NW from N Street NW to H Street NW and the reconstruction New York Avenue, NW from First Street NW to 4th Street NW. The work includes but is not limited to the following items: Installation of new curb, gutter, and sidewalk; Installation of full depth pavement, Pavement resurfacing; Installation of utilities; Installation of flexible pavement; Installation of street light poles; Installation of traffic signals; Installation of signing and pavement markings; Installation of electrical duct bank; Relocation of over-height detection system; Installation of wireless vehicle detection system; Installation of landscape improvements; Installation of erosion and sediment control; Implementation of transportation management plan; Mobilization and demobilization, provision and maintenance of work and storage areas, Engineer's field facilities and performance of employee training; Removal and disposal of any material as a result of the activities listed above, unless stated otherwise in the contract drawings.

This project is 83.15% Federally Funded and 16.85% District-Funded. DDOT selected Capitol Paving of DC, Inc. (CPDC) as the contractor and awarded the \$12,055,691.00 contract on January 9, 2019. DDOT issued notice to proceed with contract work to CPDC with work to begin on 05/13/2019 and a substantial completion date of 11/23/2020.

2. STATUS OF CONSTRUCTION / PROGRESS SUMMARY

The following were some of the work items performed during this reporting week period.

- Performed 300 SF of Flexi pave at east side of NJ Ave. NW between K & L St. NW.
- Performed 145 LF of 1' wide brick gutter at East side of NJ Ave. NW between Station 112+50 & 111+75.
- Installed 14.5 LF of 15" Basin connect PCC pipe at NE corner of NE corner of NJ Ave. and Pierce St between MH1 & MH-M2
- Installed 33 LF of 18" Basin connect PCC pipe at NE corner of NE corner of NJ Ave. and Pierce St between M & N St. NW
- Performed 77.71 SY block sidewalk on PCC Base at East side of NJ Ave. NW between Sta. 114+75 & 113+00.
- Installed 6.5 VLF OF 48" Sewer Manhole at NJ Ave. between M St. and Morgan St. at approximate Sta. 104+00.
- Used/placed 5.26 tons of temporary asphalt at the referred location mentioned above.
- Relocated two (2)-pole foundation to another at SW corner of NJ and K St. NW.
- Moved 44 LF of PCC Barrier to SE corner of New Jersey Ave. and K St. NW
- Installed 35 LF of 15" Basin Connect PCC Pipe between U1A & U2.
- Furnished and installed 128 LF of four 4" PVC Encased Electrical Conduits at NY Ave. & 4th St.

3. PHOTOS OF WORK PERFORMED THIS PERIOD

Picture No. 1



10/14/2019- Brick gutter construction at East side of NJ Ave. NW between L & Pierce St (North View)

Picture No. 2



10/14/2019- GAB placement/compaction for SW & WCR at NE corner of NJ & L St. NW. (East View)

Picture No. 3



10/15/2019- Installing 18" PCC connect pipes at SW corner of NJ and K St. NW. (South View)

Picture No. 4



10/15/2019- Soil backfill/compaction for storm pipe installed between MH F-2 & MH F-4 (North View)

Picture No. 5



10/17/2019-Demolishing to the old curb/gutter at East side of NJ Ave. b/n Pierce & NY Ave. (North View)

Picture No. 6



10/17/2019 – PCC Base Construction for utility restoration at 4th & NY Ave. NE. (North of NY)

Picture No. 7



10/17/2019- Moisture-Density test on a soil backfill for utility restoration at 4th & NY Ave. NW.

Picture No. 8



10/17/2019- Block sidewalk construction at NE corner of New Jersey Ave & L St. NW. (East view)

Picture No. 9



10/17/2019- Installing MH-F4 at NJ Ave. NW between M and Morgan St. NW.

Picture No. 10



10/17/2019- Installing CB-U1 connection to U1A at NJ & K St. NW (South View)