

SAFETY IMPROVEMENTS ON NEW JERSEY AVENUE NW
DC CONTRACT NO. DCKA-2018-C-0017
FAP No.: CM-2017(042)

CONSTRUCTION MANAGER'S
WEEKLY PROGRESS REPORT 55

05/24/2020 – 05/30/2020

Project Website: www.newjerseyaverehab.com



05/27/2020 – Placement and compacting of 25mm base asphalt at the intersection of NY Ave and NJ Ave (South View)

1. EXECUTIVE SUMMARY

Project Description:

Work under this contract consists of safety/streetscape improvements along New Jersey Avenue, NW from N Street NW to H Street NW and the reconstruction New York Avenue, NW from First Street NW to 4th Street NW. The work includes but is not limited to the following items: Installation of new curb, gutter, and sidewalk; Installation of full depth pavement, Pavement resurfacing; Installation of utilities; Installation of flexible pavement; Installation of street light poles; Installation of traffic signals; Installation of signing and pavement markings; Installation of electrical duct bank; Relocation of over-height detection system; Installation of wireless vehicle detection system; Installation of landscape improvements; Installation of erosion and sediment control; Implementation of transportation management plan; Mobilization and demobilization, provision and maintenance of work and storage areas, Engineer's field facilities and performance of employee training; Removal and disposal of any material as a result of the activities listed above, unless stated otherwise in the contract drawings.

This project is 83.15% Federally Funded and 16.85% District-Funded. DDOT selected Capitol Paving of DC, Inc. (CPDC) as the contractor and awarded the \$12,055,691.00 contract on January 9, 2019. DDOT issued notice to proceed with contract work to CPDC with work to begin on 05/13/2019 and a substantial completion date of 11/23/2020.

2. STATUS OF CONSTRUCTION / PROGRESS SUMMARY

Work this week was performed during the day on Tuesday, May 26, 2020 thru Friday, May 29, 2020. Please see the details below.

NY Ave between First St and 4th St

- Performed 69.5 LF of Brick Gutter at NY Ave at station 310+50.
- Performed 49.98 SY Block Sidewalk on PCC Base at NY at station 310+50.
- Performed 5.5 CY Hard Surface Pavement Excavation for sidewalk at NY at station 310+50.
- Performed 5.5 CY Common Excavation for sidewalk at NY at station 310+50.
- Adjusted 2 Each Sewer-Water-Utility Manhole Frame at NY at station 310+50.
- Continued to place concrete block paver sidewalk was placed at NY Ave. between 3rd St. and 4th St. NB
- Prepared final surface of aggregate base course on NY Ave between 3rd and 4th St. DDOT Technician on site to take moisture/density tests.
- Placed and compacted 254.29 Ton Asphalt Base Course, 25 mm at NY Ave. between 3rd St. and 4th St. from station 318+20 to station 320+39 NB. and at NJ Ave. and NY Ave. intersection NW corner from station 316+40 to 316+76 NB.
- Removed 3 Each Abandoned Traffic Signal/Street Light Pole Foundation at Near and at NE corner of NY Ave. and 4th St.
- Performed 55.17 SY Block Sidewalk on PCC Base-SY at NY Ave from station 311+25 to 311+85.
- Performed 6.07 CY Hard Surface Pavement Excavation at NY Ave from station 311+25 to 311+85.
- Performed 6.07 CY Common Excavation at NY Ave from station 311+25 to 311+85.
- Adjusted 2 Each Sewer-Water-Utility Manhole Frame at NY Ave from station 311+25 to 311+85.
- Replaced 42.03 Driveway-Alley Entrance, 6 Inch-SY at NY Ave and M.
- Placed and compacted 3.5 CY of aggregate base course Aggregate Base Course.
- Furnished & Installed 2 Each PCC Foundation for Traffic Sig /Pendant Post St Lt Pole at One approximately 50 ft south of NE corner of NY Ave. and 4th St. and NY Ave. between 3rd St. and 4th St. NB.
- Performed 3 VLF Sewer Manhole on Sewer 48 Inch and Less Dia.at NE corner of NY Ave. and NJ Ave.
- Installed 56 SF Brick Gutter at NY Ave & M St.
- Installed 43.35 SY Block Sidewalk on PCC Base at NY Ave & Kirby St.

- Placed 24.33 LF PCC Mountable Curb, 10 to 13 Inch Depth at NY Ave & Kirby St.
- Performed 4.77 CY Hard Surface Pavement Excavation at NY Ave & Kirby St.
- Performed 4.77 CY Common Excavation at NY Ave & Kirby St.
- Furnished and Set 12.17 LF 8"x12" Granite Straight Curb at NY Ave. between 3rd St & 4rd St.
- Furnished & Set 5.5 LF 8"x12" Granite Circular Curb Radius Under 10Ft at NY Ave. between 3rd St & 4rd St.
- Removed 1 Each Tree and Stump 6 to 12 Inch Dia. at NY Ave. between 3rd St & 4rd St.
- Placed 3.17 TON Temporary AC, HMA Surface Course, 12.5 mm at NY Ave. between 3rd St & 4rd St.
- Performed 73.910 SY Block Sidewalk on PCC Base at NY Ave. between 3rd St & 4rd St.
- Performed 8.13 CY Common Excavation at NY Ave. between 3rd St & 4rd St.
- Performed 8.13 CY Hard Surface Pavement Excavation at NY Ave. between 3rd St & 4rd St.
- Reset 1 Each Sewer-Water-Utility Manhole Frame at NY Ave. between 3rd St & 4rd St.
- Performed 51.69 SY Block Sidewalk on PCC Base at NY Ave between Kirby St & M St.
- Performed 5.69 CY Hard Surface Pavement Excavation at NY Ave between Kirby St & M St.
- Performed 5.69 CY Common Excavation at NY Ave between Kirby St & M St.
- Performed 2 Each PCC Wheelchair/Bicycle Ramp - Existing Construction at intersection of NU Ave & K St.
- Furnished and Set 7.5 LF 8"x12" Granite Straight Curb at NY Ave between Kirby St & M St.
- Furnished & Set 15 LF 8"x12" Granite Circular Curb Radius 10-100Ft at NY Ave between Kirby St & M St.
- Adjusted 2 Each Sewer-Water-Utility Manhole Frame at NY Ave between Kirby St & M St.

Intersection of NJ & I St. Ave and NY Ave & 4rd St.

- Furnished & Installed 180 LF #4 Stranded Wire at NJ Ave & K St intersection.
- Furnished & Installed 60 LF #2 Stranded Wire at NJ Ave & K St intersection.
- Furnished & Installed 8 LF 1-2" Schedule 40 Rigid PVC Conduit (Supp to duct bank) for over height structure near Kirby St.
- Furnished & Installed 1 Each Galvanized Steel Transformer Base NY Ave between 1 St & Kirby St.
- Furnished 1 Each Temp Port Concrete Base 20 Ft Steel Traffic Pole on Trans Base and relocated 1 Each Any Steel Traffic Sig Pole From 1 Foundation to Another at NY & 4rd T10
- Furnished & Installed 1 Each Traffic Signal Controller And Cabinet at NJ Ave /2th/ I St (this cabinet is temporary until the new cabinet is delivered).

NY Ave/ 4rd St and NY Ave/ NJ Ave

- Furnished & Installed 30 LF One 2 In & One 4 In PVC Encased Elec Conduits at NY Ave & 4rd St. TS-5&L-5
- Furnished 1 Each Temp Port Concrete Base 20 Ft Steel Traffic Pole on Trans Base at NY Ave & 4rd St. T-10 and relocated 1 Each Any Steel Traffic Sig Pole From 1 Foundation to Another
- Furnished 7 Each Twin 20 Steel/Aluminum Pole at NJ Ave L8, L9, L17, L36, L38, L42, L44

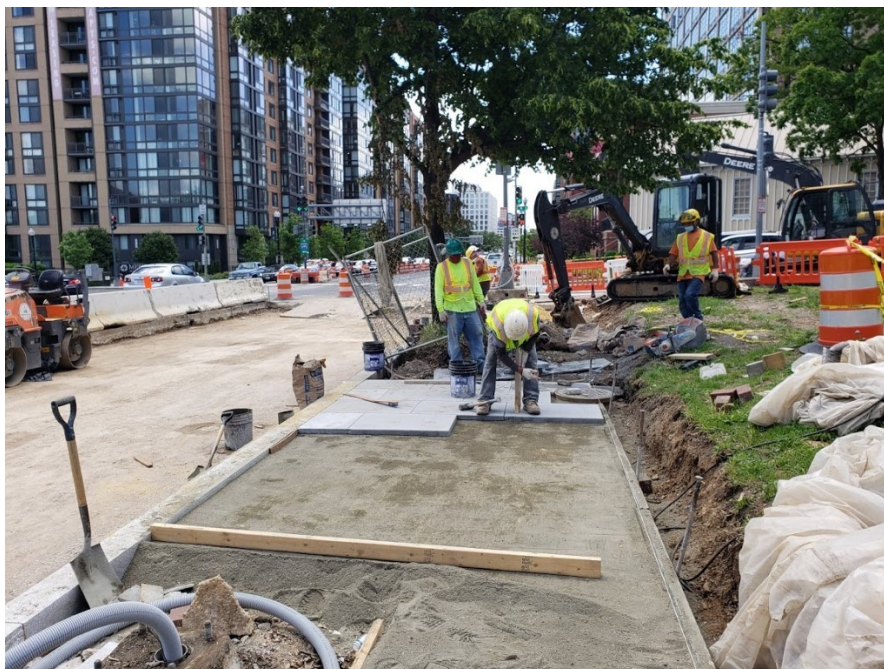
NY Ave and NJ Ave

- Furnished & Installed 8 Each Pedestrian Push Button at intersection NJ Ave & K St.
- Furnished & Installed 8 Each Accessible Pedestrian Signal Unit w/Custom Messaging at intersection NJ Ave & K St.
- Furnished & Installed 3,428 LF #10 Stranded Wire at NJ Ave poles 8, 9, 17, 36, 38, 42 & 44
- Furnished & Installed 1,714 LF #8 Stranded Wire at NJ Ave poles 8, 9, 17, 36, 38, 42 & 44

3. PHOTOS OF WORK PERFORMED THIS PERIOD



Picture No. 1: 05/26/2020 – Final compaction and grading of aggregate base course underway at NY Ave. between 3rd St. and 4th St. NB. (West View)



Picture No. 2: 05/26/2020 – Placing block sidewalk underway at NY Ave. between 3rd St. and 4th St. NB. (West View)



Picture No. 3 - 05/26/2020 – Block Sidewalk on PCC Base at NY Ave. station 310+50 (West View)



Picture No. 4 – 05/26/2020 – Traffic light transferred at NY Ave. between 3rd. St. and 4th. St



Picture No. 5 – 05/27/2020 – Placed asphalt 25mm base course at NY Ave. between 3rd St. and 4th St. NB. (West View)



Picture No. 6 – 05/27/2020 – Asphalt coring in progress on the base asphalt paced in the intersection of NY Ave and NJ Ave. (South view)



Picture No. 7 – 05/27/2020 –Driveway installation at NY and M St. NW. (East View)



Picture No. 8 – 05/28/2020 – Streetlight foundation PCC work underway at NY Ave. between 3rd St. and 4th St. NB.



Picture No. 9 – 05/28/2020 – Preparation of the area for sidewalk at NE corner NY Ave. and 4th St. (East View)



Picture No. 10 – 05/29/2020 – Pouring concrete for gutter base at NE corner NY Ave. and 4th St. (North View)