

SAFETY IMPROVEMENTS ON NEW JERSEY AVENUE NW

DC CONTRACT NO. DCKA-2018-C-0017

FAP No.: CM-2017(042)

**CONSTRUCTION MANAGER'S
WEEKLY PROGRESS REPORT 52**

05/03/2020 – 05/09/2020

Project Website: www.newjerseyaverehab.com



05/08/2020 – Fine grading and compacting of aggregate base on NY Ave. between First St. and NJ Ave. (East View)

1. EXECUTIVE SUMMARY

Project Description:

Work under this contract consists of safety/streetscape improvements along New Jersey Avenue, NW from N Street NW to H Street NW and the reconstruction New York Avenue, NW from First Street NW to 4th Street NW. The work includes but is not limited to the following items: Installation of new curb, gutter, and sidewalk; Installation of full depth pavement, Pavement resurfacing; Installation of utilities; Installation of flexible pavement; Installation of street light poles; Installation of traffic signals; Installation of signing and pavement markings; Installation of electrical duct bank; Relocation of over-height detection system; Installation of wireless vehicle detection system; Installation of landscape improvements; Installation of erosion and sediment control; Implementation of transportation management plan; Mobilization and demobilization, provision and maintenance of work and storage areas, Engineer's field facilities and performance of employee training; Removal and disposal of any material as a result of the activities listed above, unless stated otherwise in the contract drawings.

This project is 83.15% Federally Funded and 16.85% District-Funded. DDOT selected Capitol Paving of DC, Inc. (CPDC) as the contractor and awarded the \$12,055,691.00 contract on January 9, 2019. DDOT issued notice to proceed with contract work to CPDC with work to begin on 05/13/2019 and a substantial completion date of 11/23/2020.

2. STATUS OF CONSTRUCTION / PROGRESS SUMMARY

Work this week was performed during the day on Monday May 4, 2020 thru Saturday May 9, 2020. Please see the details below.

NY Ave between First St and 4th St

- Performed 350.33 CY of hard surface excavation from station 313+50 to 316+00.
- Performed 177.33 CY of common excavation from station 313+50 to 316+00.
- Installed 1225.67 SY of TX7 Geogrid at this location, and placed and compacted 301.96 CY of aggregate base course between station 313+50 to 316+00.
- Performed 4.98 Ton Temporary AC, HMA Surface Course at NW corner of NY Ave. and 1st St.
- Remove Abandoned Traffic Signal/Street Light Pole Foundation- 2 EACH at NW corner of NY Ave. and 1st St.
- Performed 87.85 CY of common excavation from station 316+00 to 317+75 NB.
- Performed 4.2 CY of hard surface excavation from station 316+00 to 317+75 NB.
- Performed 210.36 CY of hard surface excavation NW corner of NY Ave. and 1st St. NB.
- Installed 633.23 SY of TX7 Geogrid at this location, and placed and compacted 162.61 of aggregate base course between station 316+00 to 317+75 NB.
- Furnished and Set 10.83 LF of 8"x12" Granite Straight Curb NW corner of NY Ave. and 1st St. NB.
- Furnished & Set 29 LF of 8"x12" Granite Circular Curb at NW corner of NY Ave. and 1st St. NB
- Performed 2 Each Wheelchair/Bicycle Ramp at NW corner of NY Ave. and 1st St. NB.
- Removed Abandoned Traffic Signal/Street Light Pole Foundation - 3 EACH at NY Ave. between NJ Ave. and 3rd St. NB.
- Remove Abandoned Traff Signal Controller Cabinet Foundation - 1 EACH at NY Ave. between NJ Ave. and 3rd St. NB.
- DDOT Technician was on the site to check the proof roll.
- Prepared subgrade and performed proof roll from station 316+25 and station 317+25.
- Furnished & Set 4.83 LF of 8"x12" Granite Circular Curb between NJ Ave and 3rd St.
- Furnished and Set 37.58 LF of 8"x12" Granite Straight Curb NJ Ave and 3rd St.
- Performed 4.48 CY of hard surface excavation at NY Ave. between NJ Ave. and 3rd St. NB.
- Adjust Sewer-Water-Utility Manhole Frame- 2 EACH NY Ave. between NJ Ave. and M St. NB.
- Performed 87.01 CY of hard surface excavation at NY Ave. between M St. and NJ Ave. NB.
- Performed 39.1 CY of common excavation at NY Ave. between M St. and NJ Ave. NB.
- Installed 251 SY of TX7 Geogrid at this location, and placed and compacted 70.06 CY of aggregate base course at NY Ave. between M St. and NJ Ave. NB.

- DDOT Technician was on the site to check the proof roll.
- Prepared subgrade and performed proof roll NY Ave. between M St. and NJ Ave. NB.
- Furnished & Set 16.23 LF of 8"x12" Granite Circular Curb
- Furnished and Set 15.25 LF of 8"x12" Granite Straight Curb
- Adjusted 2 Each Sewer-Water-Utility Manhole Frame
- Performed 3.33 CY of hard surface excavation
- Performed 64 SF of Brick Gutter NY Ave NW Between NJ Ave and 3rd St
- Removed 1 Each Abandoned Traffic Signal/Street Light Pole Foundation at NY Ave NW Between NJ Ave and 3rd St

NJ Ave and K St Intersection

- Furnished & Installed 2 Each of 8 Ft Mast Arm w/Clamp & Removable End Clamp at L1-L2
- Furnished 5 Each Red, Yellow and Green Ball Led Module (12 inch) at 6, 6A, 7, 8, 8A
- 12 In Overlay 2 Each White Wlkng Person & Portlnd Orange Led Mod at P9, P16
- Furnished 2 Each 12 Inch Portland Orange Countdown Led Module
- Finished and Installed 3 Each 3 Section Conventional Traf Sig Head On Pole (Lenses 12") - at 6,7,8
- Finished and Installed 2 Each 3 Section Conv Traf Sig Head On Mast Arm (Lenses 12") - at 6A,8A
- Finished and Installed 2 Each 2 Sect Conventional Pedestrian Signal Head on Pole (12") at P9,P16
- Finished and Installed 2 Each 200 Watt Teardrop LED Fixture complete with photocell - at L1, L2
- Finished and Installed 2806 LF of #10 Stranded Wire-LF at NJ Ave and Pierce St to NJ Ave and 3rd St.
- Finished and Installed 1403 LF of #8 Stranded Wire-LF at NJ Ave and Pierce St to NJ Ave and 3rd St.
- Furnished & Installed 8 Ft Mast Arm w/Clamp & Removable End Clamp – 1 EACH
- Furnished & Installed Closed Circuit Television Camera System – 1 EACH
- Furnished Red, Yellow & Green Ball Led Module (12 inch) – 3 EACH
- 12 In Overlay White Wlkng Person & Portlnd Orange Led Mod – 3 EACH
- Furnished 12 Inch Portland Orange Countdown Led Module – 3 EACH
- Furnished & Installed 3 Section Conventional Traf Sig Head On Pole (Lenses 12") – 2 EACH
- Furnished & Installed 3 Section Conv Traf Sig Head On Mast Arm (Lenses 12") – 1 EACH
- Furnished & Installed 2 Sect Conventional Pedestrian Signal Head on Pole (12") – 3 EACH
- Furnished & Installed 200 Watt Teardrop LED Fixture complete with photocell – 1 EACH
- Furnished & Installed #10 Stranded Wire - 1340 LF
- Furnished & Installed #8 Stranded Wire - 670 LF
- Furnished & Installed 8 Ft Mast Arm w/Clamp & Removable End Clamp- 1 EACH
- Furnished Red, Yellow & Green Ball Led Module (12 inch) – 4 EACH
- Furnished Green and Yellow Ball Led Module (12 inch)- 2 EACH
- 12 In Overlay White Wlkng Person & Portlnd Orange Led Mod – 5 EACH
- Furnished 12 Inch Portland Orange Countdown Led Module- 5 EACH
- Furnished & Installed 3 Section Conventional Traf Sig Head On Pole (Lenses 12") - 2 EACH
- Furnished & Installed 5 Section Conventional Traf Sig Head On Pole (Lenses 12") - 1 EACH
- Furnished & Installed 3 Section Conv Traf Sig Head On Mast Arm (Lenses 12") - 1 EACH
- Furnished & Installed 2 Sect Conventional Pedestrian Signal Head on Pole (12") - 5 EACH
- Furnished & Installed 200 Watt Teardrop LED Fixture complete with photocell - 1 EACH

NY Ave and First St Intersection

- Furnished & Installed One 2 In&One 4 In PVC Encased Elec Conduits 57 LF at the NW corner of NY Ave and First St.
- Furnished & Installed PCC Foundation for Traffic Sig /Pendant Post St Lt Pole - 2 Each at this location.

NY Ave between 3rd St and 4th St

- Furnished & Installed Four 4 In PVC Encased Electrical Conduits 124 LF
- Furnished & Installed One 2 In&One 4 In PVC Encased Elec Conduits 10 LF
- Furnished & Installed One 2 In&One 4 In PVC Encased Elec Conduits 82 LF

3. PHOTOS OF WORK PERFORMED THIS PERIOD



Picture No. 1: 05/04/2020 – Subgrade undercut in progress after proof rolled the section shown on photo at NY Ave. between M St. and NJ Ave. NB. (West View)



Picture No. 2: 05/04/2020 – Finished base course which was compacted and rolled with smooth steel roller at NY Ave. between NJ Ave. and M St. NB. (South View)



Picture No. 3 - 05/04/2020 – Traffic light installation at the SW corner of NJ Ave and K St. NW (South View)



Picture No. 4 – 05/05/2020 – Installed granite curb and concrete pour in progress for the wheelchair ramp at NW corner of NY Ave. and 1st St. (West View)



Picture No. 5 – 05/05/2020 – CCTV installation at NW corner of NJ and K St. NW (South View)



Picture No. 6 – 05/07/2020 – Brick gutter work started at NW corner of NY Ave. and 1st. St. (East view)



Picture No. 7 – 05/07/2020 – Installed traffic light foundation at NW corner of NY and 1st. St. NW



Picture No. 8 – 05/08/2020 – PVC conduit pipes installation between 3rd. St and 4th. St. NW. (East view)



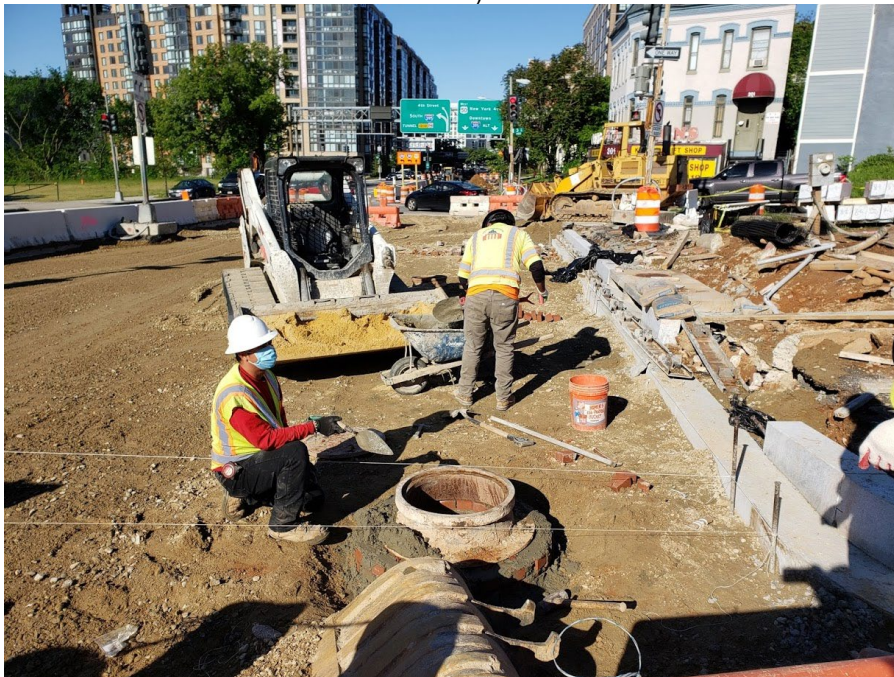
Picture No. 9 – 05/08/2020 – Fine grading and checking grades at NY Ave. between Kirby St and M St. (West View)



Picture No. 10 – 05/08/2020 – Geogrid and 21A stone placed and compacted in progress for the full depth excavation at NY Ave. between M St. and NJ Ave. NB. (South View)



Picture No. 11 – 05/08/2020 – 21A stone placed and compacted at NY Ave. between M St. and NJ Ave. NB. (East View)



Picture No. 12 – 05/09/2020 – Adjust the manhole at Ny Ave. NW between NJ Ave and 3rd St. (West View)